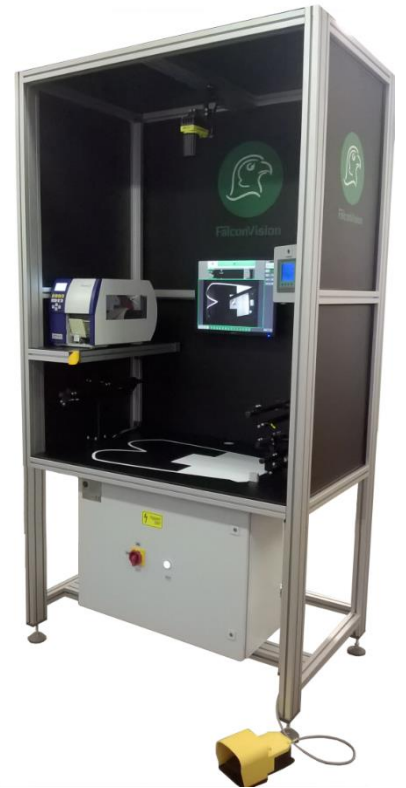


Its Task

The device is a manual service PLC-driven workstation that can deliver the type-recognition of the right and left rear windscreen panes of VW Scirocco automobiles based on their colouring and antenna design. Controlling fixing pins, antenna joints and the existence of the black primer layer are an integral part of its functioning. Depending on the result of the evaluation the device can print a sticker with the identifier of the recognized type which the operator can stick on the workpiece. The device identifies the series of characters on the sticker and compares that with the code specified as a result of the evaluation, thus hindering the possibility of a mistaken type identification by the human workforce.



Apart from the quick and exact evaluation, ergonomic and compact design, abrasion resistant bench surface and aesthetic look has also played a key role in the product's design.

controlling the existence of antenna joint

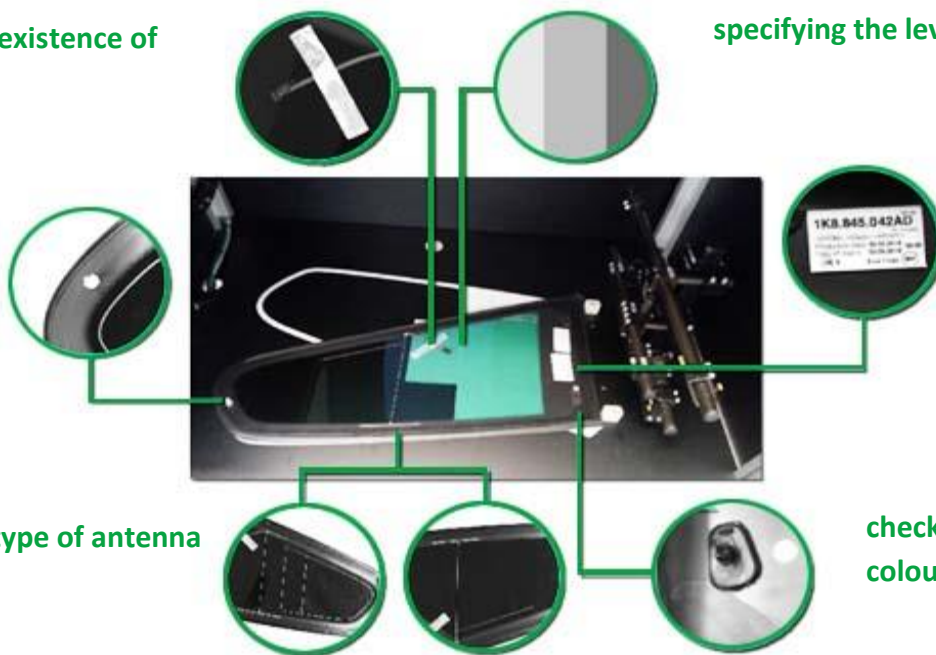
specifying the level of colouring

checking the existence of white coloured pin

specifying and reading type identifier

specifying the type of antenna design

checking the existence of black coloured pin



The Process of Functioning

The operator logs in on the touch screen of the HMI interface of the device with his unique three-digit code and password at the beginning of the shift. The user-friendly interface helps the worker with clear messages and signals. After having logged in, the operator places the workpiece on the foiled circle fitted to the bumpers, exits the workspace and presses the pedal. At this point the device takes 3 pictures thus specifying the position of the workpiece, the level of pane colouring, the existence of the black and white pins, the antenna joint and the black primer layer and identifies the type of the antenna design. Using these data it also specifies the type of the workpiece. The results of the evaluation with the piece counter by type are graphically and verbally presented on the display which is placed in an ergonomically ideal height. In the same time the device prints the identified type, the current date, the date of expiration of the black primer and the unique identifier of the operator on a sticker format compatible with the internal standards of the client.

The worker places the sticker on the workpiece and presses the pedal again. The device specifies the position of the workpiece again, identifies its major specifications (antenna design, pane colour etc.) and finally reads the identifying series of characters on the sticker. In case it does not match the type recognized in the previous cycle, it signals the error to the operator by displaying the text "NOK".

Following this the operator removes the workpiece from the workspace of the device.

